



MARRIOTT
BANGKOK
THE SURAWONGSE



CONTENTS

1 Introduction

2 Location

- 1 Hotel Map
- 2 Local Attractions
- 3 Floor Plan

3 Meeting & Event Venues

- 4 The Surawongse Ballroom
- 5 The Silom Room
- 6 The Garden at Surawongse

4 Room & Suite

- 7 Deluxe, Premium, Executive
- 8 M Suite
- 9 Other Suites
- 10 M Club

5 Restaurants and Bars

- 11 Praya Kitchen
- 12 Yào Restaurant
- 13 Yào Rooftop Bar
- 14 The Lobby Lounge
- 15 Pool Bar

6 Facilities

- 16 Photos
- 17 Testimonials
- 18 Awards & Recognition

1

INTRODUCTION



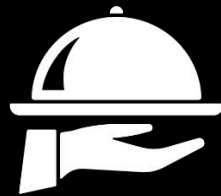
INTRODUCTION



The 1st Marriott Hotel in Thailand to offer a **combination** of spacious 303 **guestrooms, suites,** and **residential suites** from 1 to 3 bedrooms.



Various meeting and event spaces include ballroom with private drop-off area, meeting rooms, rooftop garden, courtyard garden and residential style function venue.



As a Story Maker, our **dedicated event and banquet team** aims to tailor any type of events to perfection.



5 Restaurants & Bars; Praya Kitchen, Yào Restaurant & Rooftop Bar, The Lobby Lounge and Pool Bar.

2

LOCATION



BANGKOK MARRIOTT HOTEL THE SURAWONGSE

HOTEL MAP

40 minutes From
Suvarnabhumi Airport

Expressway

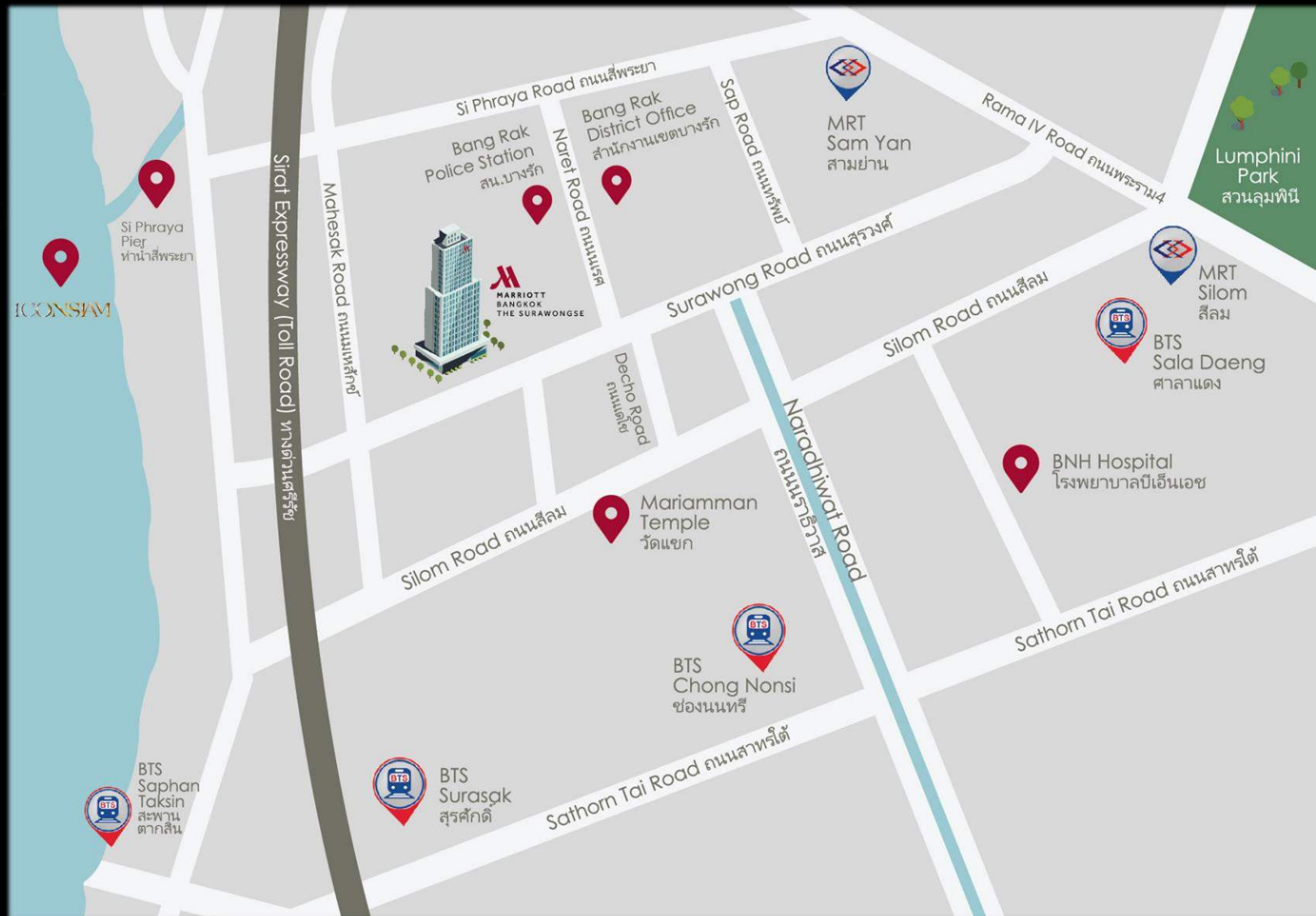
- Sirat Expressway

Sky train (BTS)

- Surasak
- Chong Nonsri

Metro (MRT)

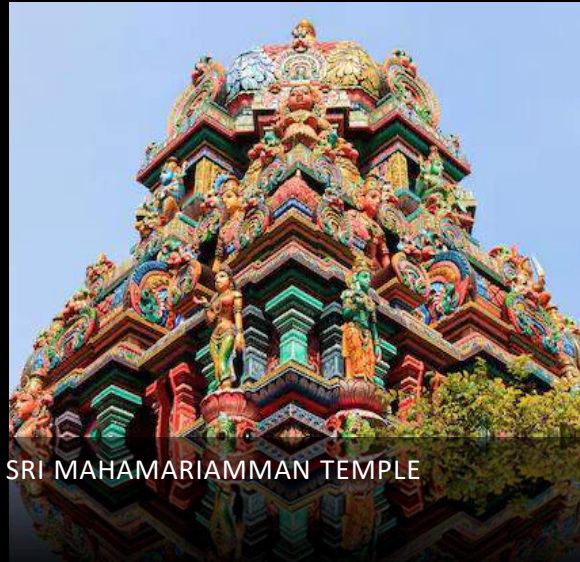
- Sam Yan
- Silom



**LOCAL
ATTRACTIONS**
(5-15 minutes from
the hotel)



ICONSIAM



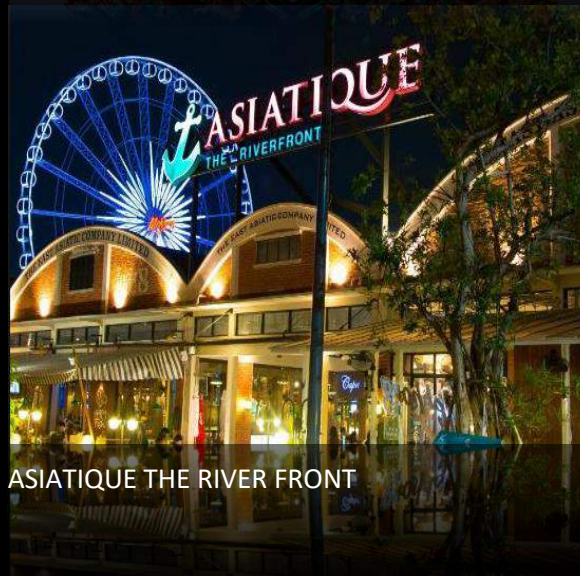
SRI MAHAMARIAMMAN TEMPLE



YAOVARAT



EXPLORE CHAO PHRAYA RIVER

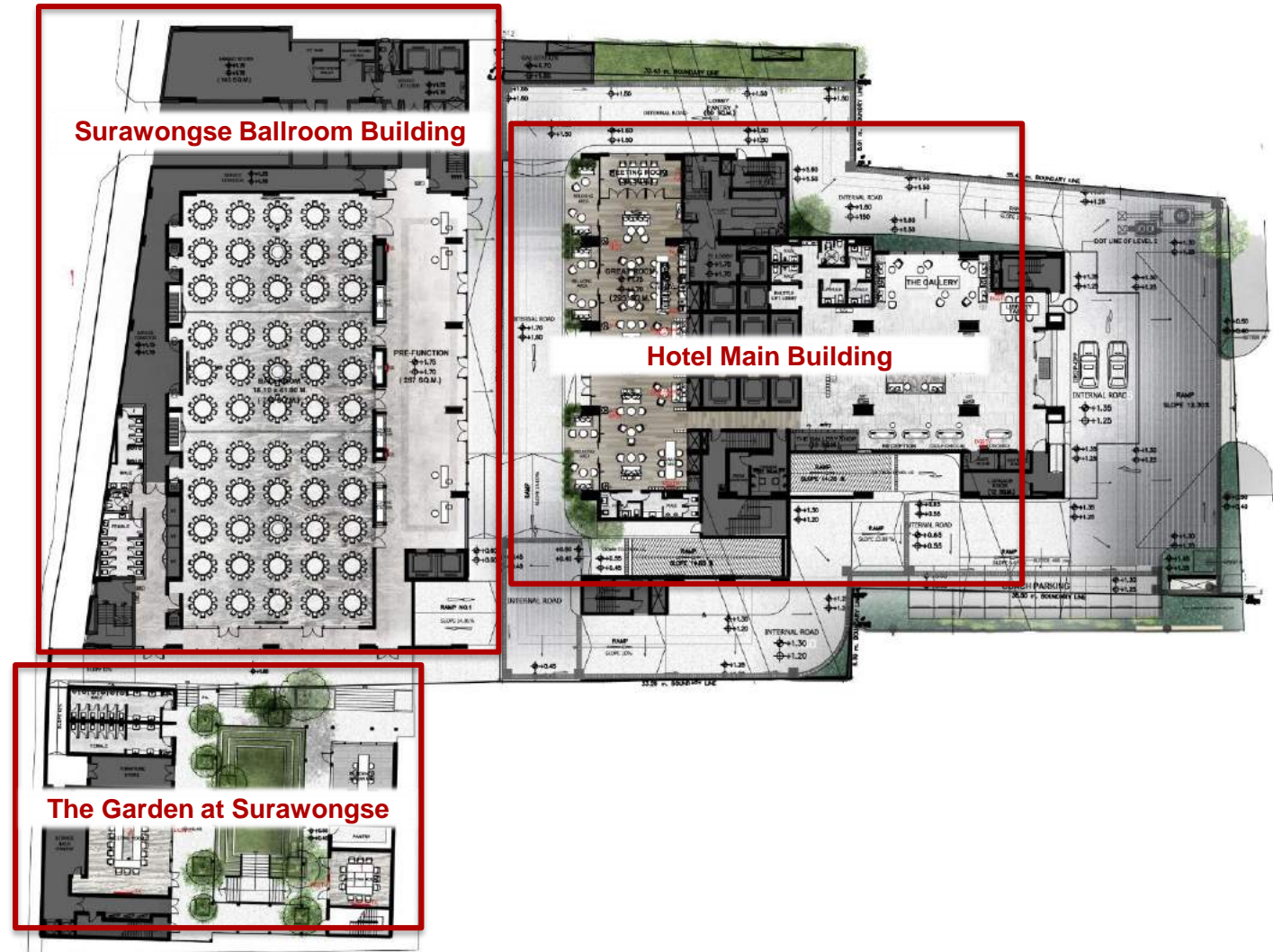


ASIATIQUE THE RIVER FRONT



KING POWER MAHANAKHON

THE HOTEL FEATURES 3 INTER-CONNECTED BUILDINGS








3

MEETING & EVENT VENUES



BALLROOM AND MEETING ROOMS

MEETING ROOM NAME	FLOOR	WIDTH x LENGHT		AREA	HEIGHT					
(Capacity with standard stage)		Meters		m ²	Meters					
The Surawongse Ballroom 1	1	17.60	20.40	359.04	7.00	240	250	175	450	78
The Surawongse Ballroom 2	1	17.60	11.60	204.16	7.00	96	120	84	252	48
The Surawongse Ballroom 3	1	17.60	10.50	184.80	7.00	96	100	70	180	48
The Surawongse Ballroom 1+2	1	17.60	32.00	563.20	7.00	408	400	280	720	114
The Surawongse Ballroom 2+3	1	17.60	22.10	388.96	7.00	264	250	175	480	78
The Surawongse Ballroom	1	17.60	42.50	748.00	7.00	576	600	420	1,050	150
The Surawongse Rooftop	3	14.40	29.70	427.68	-	-	270	189	-	-
The Silom Room 1	2	6.70	7.60	50.92	5.00	27	40	28	50	18
The Silom Room 2	2	6.60	7.50	49.50	5.00	27	40	28	50	18
The Silom Room 3	2	6.60	9.30	61.38	5.00	27	40	28	50	18
The Silom Room 1+2	2	6.60	15.10	99.66	5.00	72	80	56	130	42
The Silom Room 2+3	2	6.60	16.80	110.88	5.00	54	80	56	100	42
The Silom Room	2	6.60	24.40	161.04	5.00	126	120	84	240	66
The Silom Room 4	2	5.80	8.00	46.40	5.00	27	40	28	50	18
The Silom Room 5	2	5.80	8.00	46.40	5.00	27	40	28	50	18

BALLROOM AND MEETING ROOMS

MEETING ROOM NAME	FLOOR	WIDTH x LENGHT		AREA	HEIGHT					
<i>(Capacity with standard stage)</i>		Meters		m ²	Meters					
Dok-Keaw Room	1	8.30	13.80	115	5.00	63	60	48	108	39
The Leelawadee Living Room	1	5.40	14.00	-	5.00	-	-	-	-	-
The Garden at Surawongse	1	7.20	15.00	-	-	-	80	56	100	-
Ka-Noon Room	M	4.70	6.70	31	3.00	18	30	21	24	15
Chom-Poo Room	M	4.70	6.70	31	3.00	18	30	21	24	15
Ma-Kham Room 1	M	8.30	6.90	57	3.00	27	30	21	56	18
Ma-Kham Room 2	M	8.30	6.90	57	3.00	27	30	21	56	18
Ma-Kham Room 1+2	M	16.60	13.80	115	3.00	54	80	56	140	39
Ma-Muang Room	2	5.60	10.10	57	3.00	30	30	21	56	21
Noi-Na Room	2	6.60	6.80	59	3.00	24	40	28	48	21
The Terrace at Surawongse	3	-	-	-	-	-	-	-	-	-

THE SURAWONGSE BALLROOM



Natural daylight



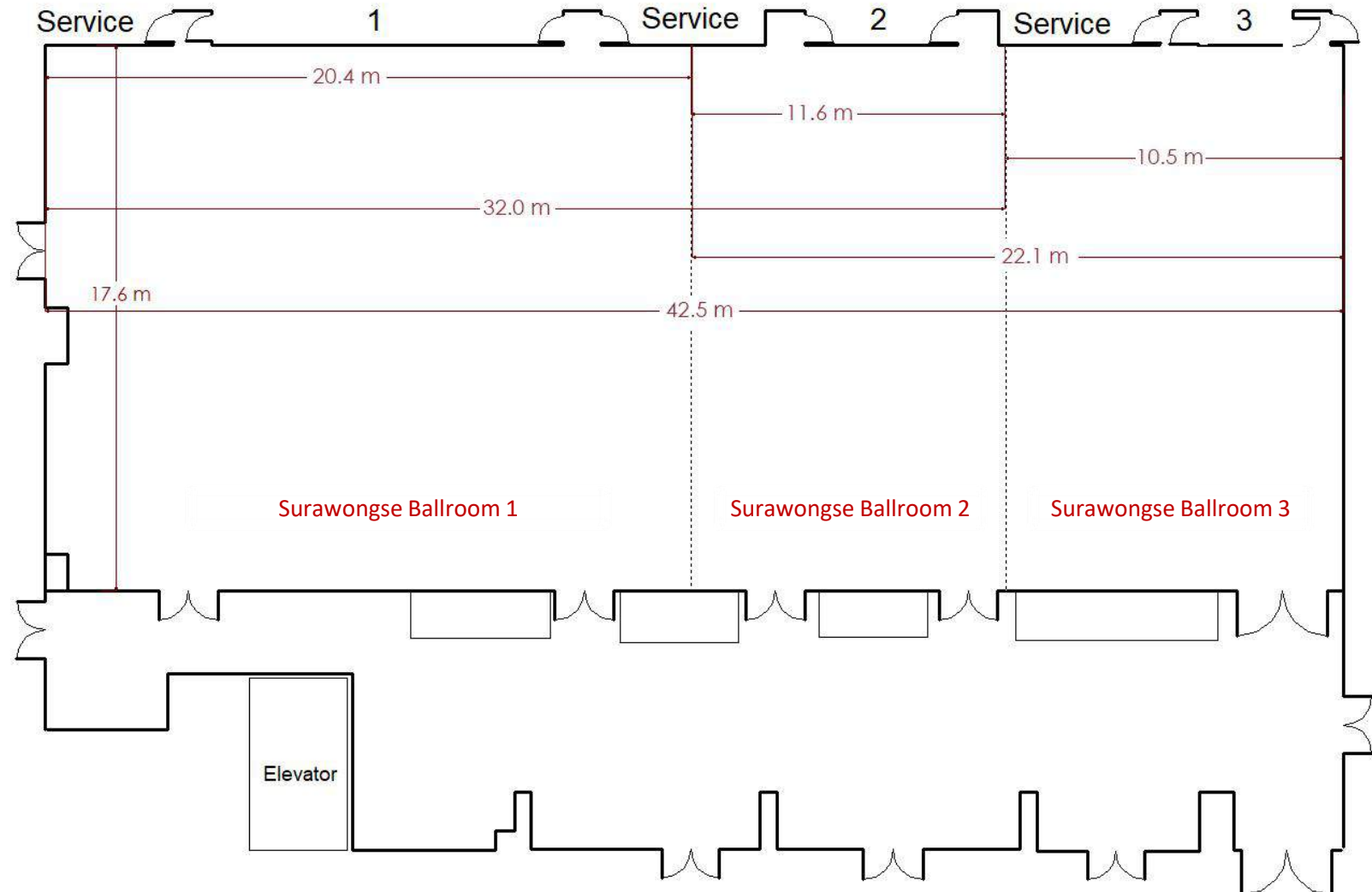
7 meter-height ceiling



Pillarless



Spacious coffee break area



THE SURAWONGSE BALLROOM



THE SILOM ROOM



Natural daylight



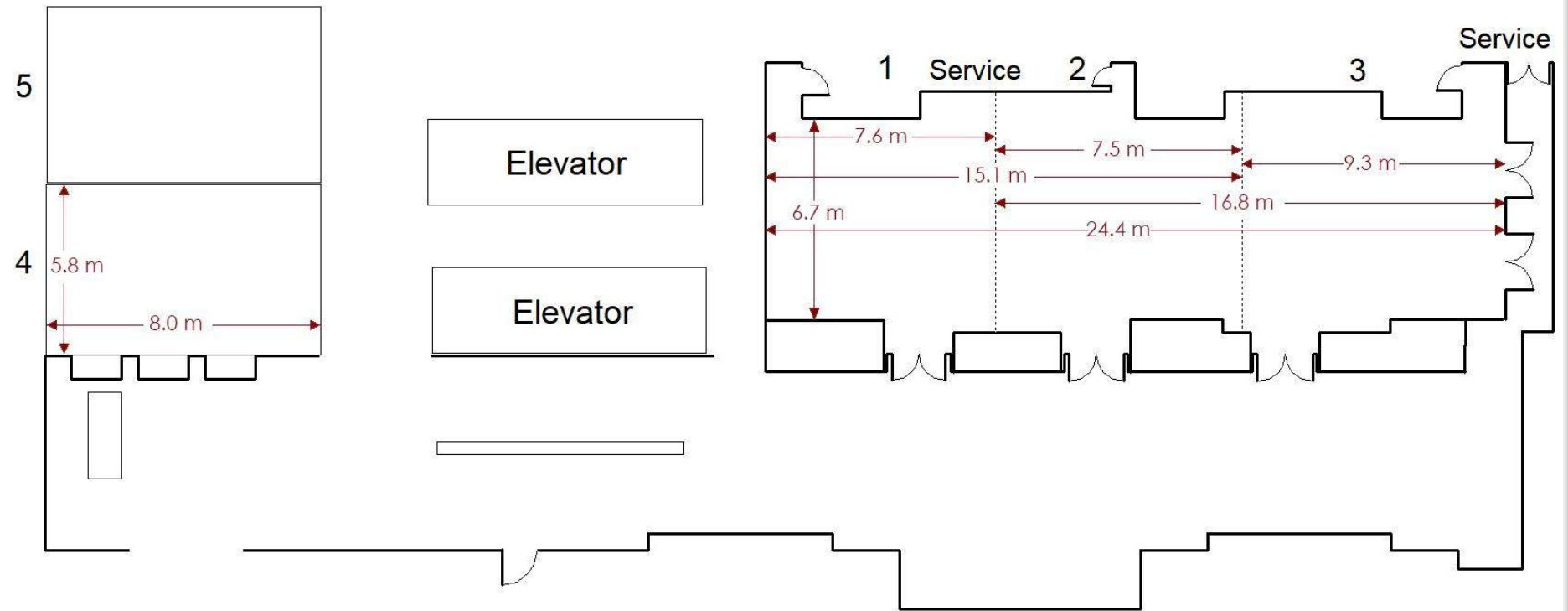
5 meter-height ceiling



Pillarless



Spacious coffee break area

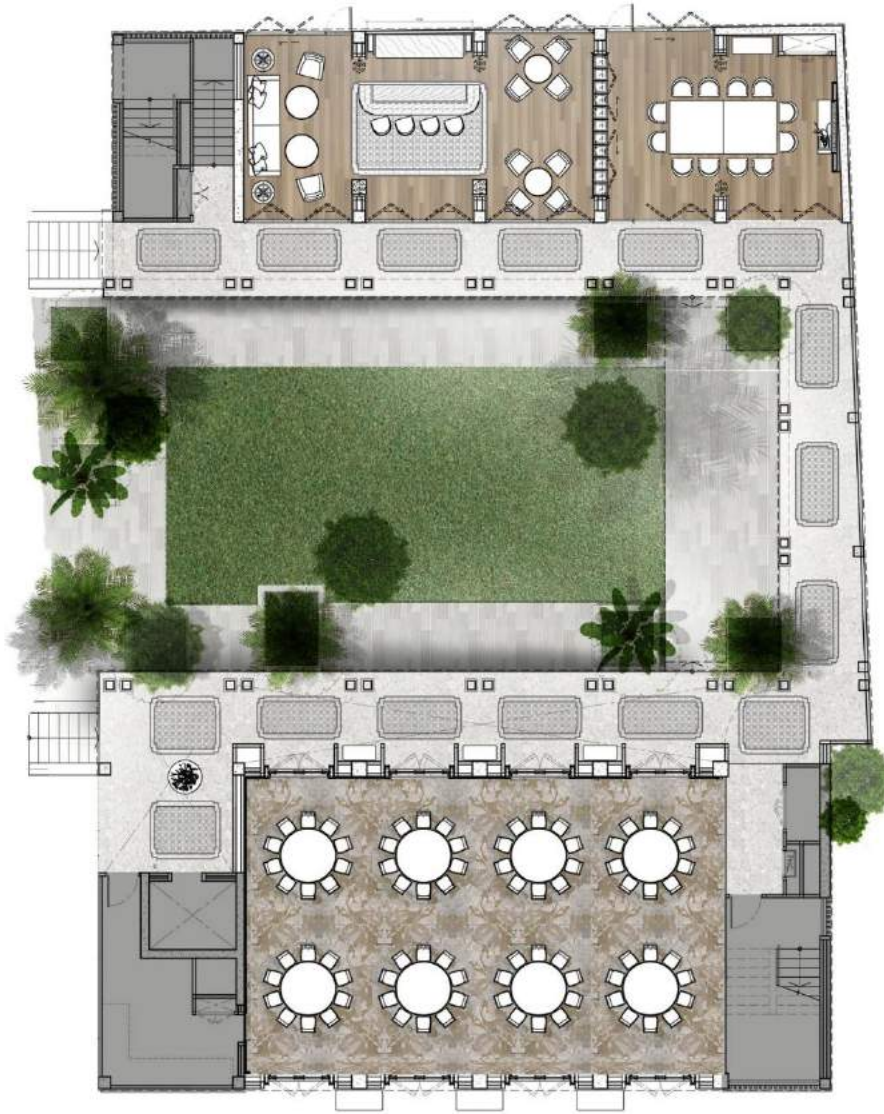


THE SILOM ROOM



THE GARDEN AT SURAWONGSE

-  Natural daylight
-  5 meter-height ceiling
-  Pillarless
-  Spacious coffee break area



Leelawadee Living Room

The Garden At Surawongse

Dok-Keaw Room

THE GARDEN AT SURAWONGSE



**THE GARDEN AT
SURAWONGSE –
MEETING ROOMS**



4
**ROOMS &
SUITES**



ROOM TYPES

GUESTROOM INVENTORY			
ROOM TYPES / SIZE (m ²)	SINGLE ROOM	TWIN ROOM	TOTAL ROOMS
Deluxe (37 m ²)	50	60	110
Premium Deluxe (37 m ²)	23	10	33
Executive (37 m ²)	21	5	26
M Suite (74 m ²)	25	-	25
Kehabadee Suite and Senabadee Suite (127 m ²)	2	-	2
Amornpimarn Presidential Suite (355 m ²)	1	-	1
Total		197	
RESIDENTIAL SUITE INVENTORY			
ROOM TYPES / SIZE (m ²)	TOTAL ROOMS		
1 Bedroom Residential Suite (65 m ²)	35		
2 Bedroom Residential Suite (95 m ²)	65		
3 Bedroom Residential Suite (141 m ²)	6		
Total	106		

DELUXE, PREMIUM, EXECUTIVE

- 37 square meter
- Non-smoking
- 1 King or 2 Double
- Separated bathtub and shower
- Working desk and chair
- Mini bar
- 49" flat screen satellite TV
- Room service
- Access to M Club
(Executive Room only)



M SUITE, 1-BEDROOM RESIDENTIAL SUITE

- 64-74 square meter
- Non-smoking
- Separated living room
- Dining table
- Separated bathtub and shower
- Mini bar
- 55" flat screen satellite TV
- Room service

For M Suite only

- Access to M Club

For Residential Suite only

- Fully equipped kitchenette
- Washing machine



OTHER SUITES

- 2-Bedroom Residential Suite
- 3-Bedroom Residential Suite
- Kehabodee Suite
- Senabodee Suite
- Amornpimarn Presidential Suite



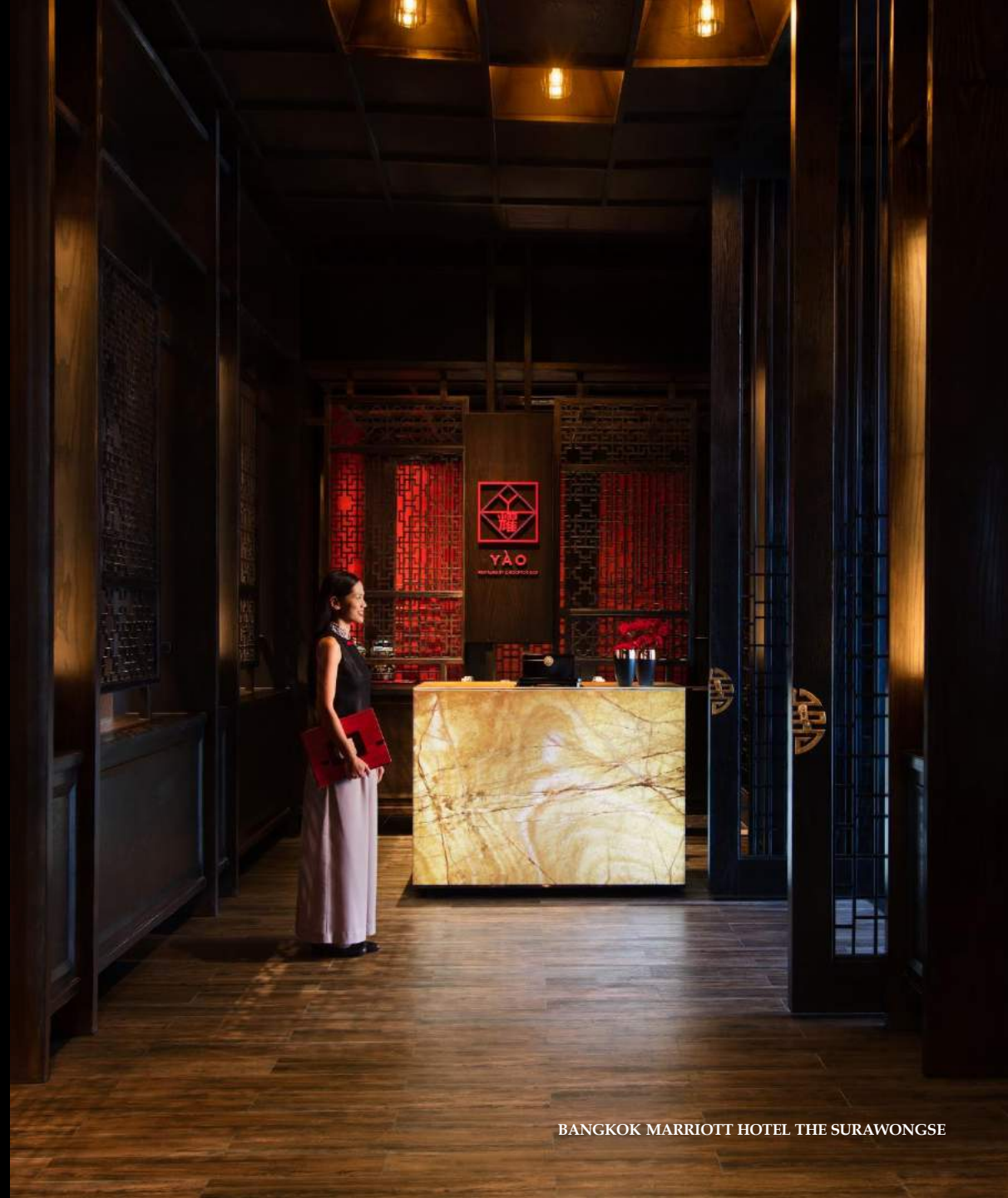
M CLUB

Located on the 31st floor with sweeping views of the city, this dedicated space offers an array of personalized services including breakfast, all-day refreshments, evening drinks and private meeting rooms.



5

**RESTAURANTS &
BARS**



PRAYA KITCHEN

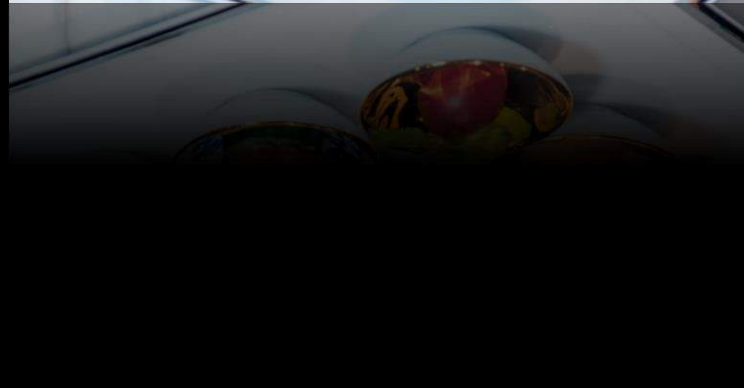
An all-day dining restaurant offers authentic Thai menu that brings back forgotten recipes, passing down from generation to generation.

The simple yet sophisticated delicacies are recreated from chefs' childhood memories, using seasonal local ingredients.



YÀO RESTAURANT

Serving selections of modern Shanghainese and Cantonese cuisine with deep traditional roots sprinkled with contemporary creations composed by native chefs. The five private dining rooms provide a perfect setting for special occasions.



YÀO ROOFTOP BAR

Bangkok's first Chinese influenced multi-level hot spot offering the oriental inspired cocktails and midnight Dim Sum while savoring a breathtaking view of Bangkok and Chao Praya River at night.



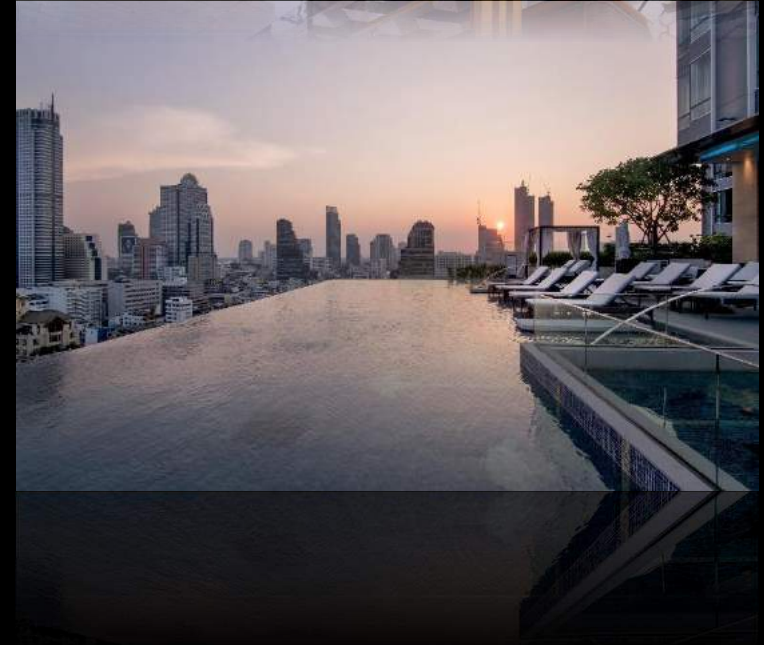
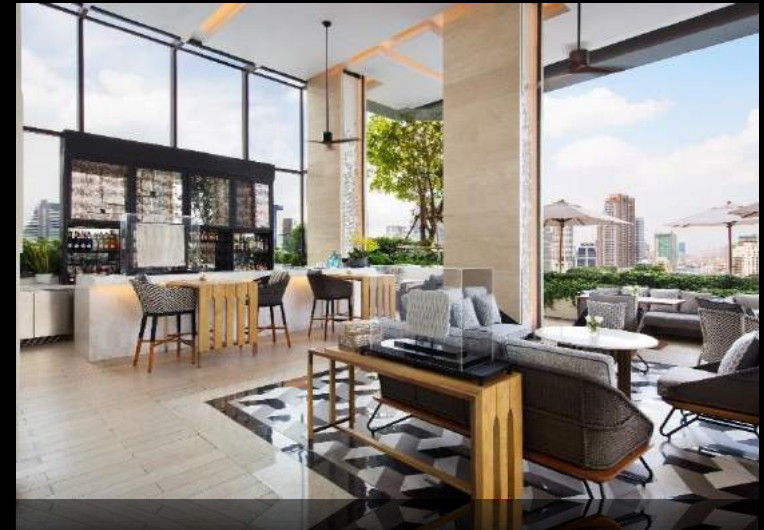
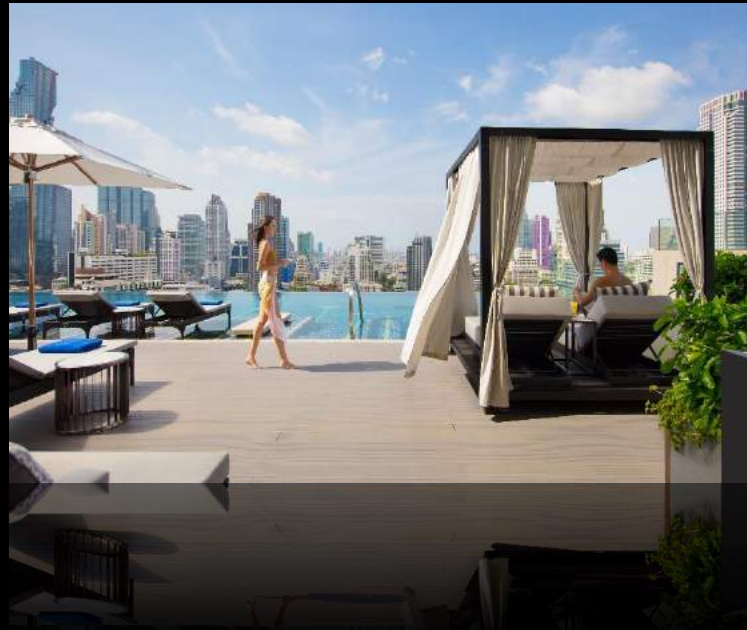
THE LOBBY LOUNGE

Delight your senses with a cup of coffee and high tea to choose from the traditional Afternoon Tea Set or Thai Afternoon Tea Set, and then unwind with innovative cocktails, wines or local beers after dark.

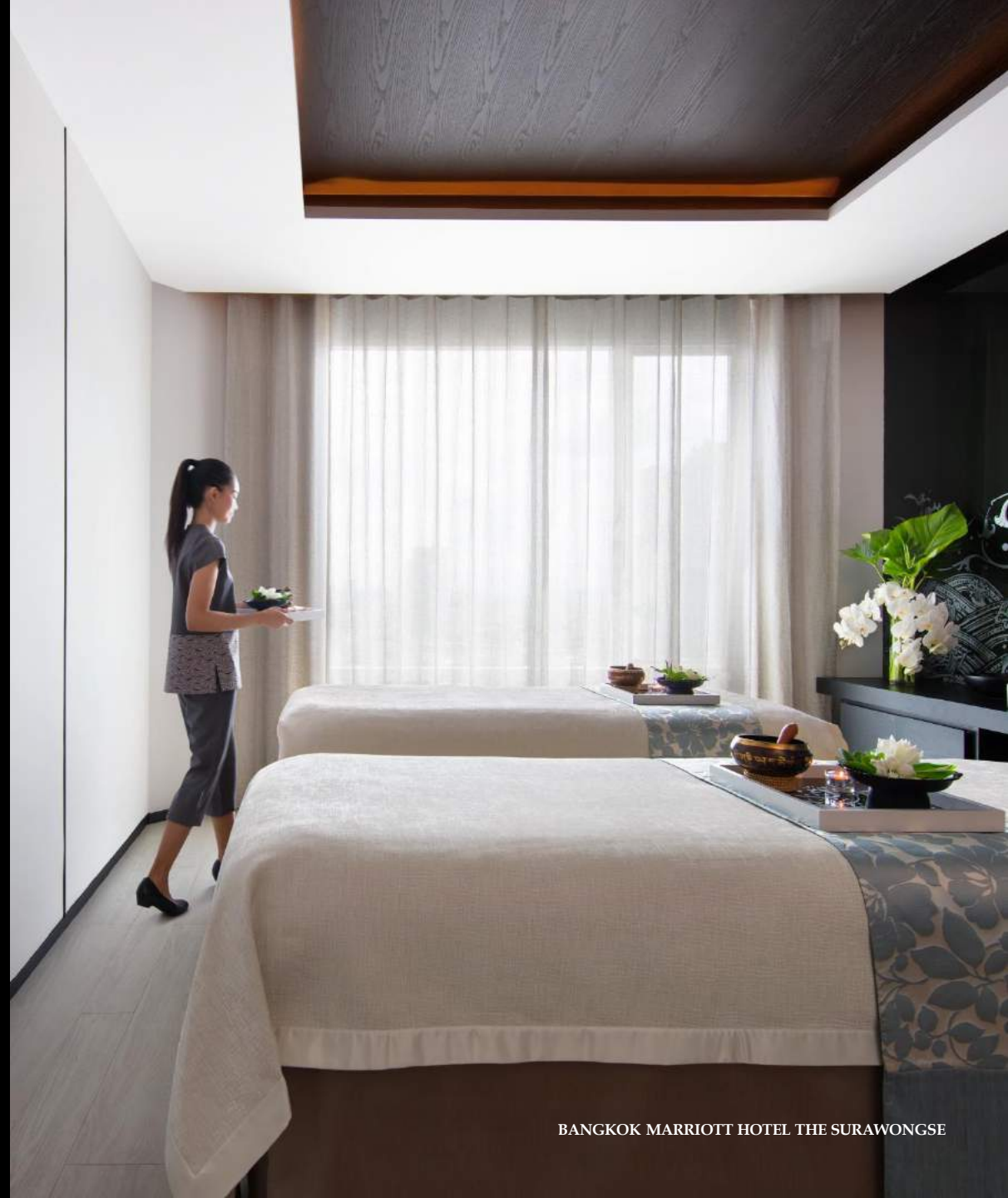


POOL BAR

Set on the 18th floor, an al fresco Pool Bar serves a delectable selection of snacks and refreshing beverages throughout the day with a panoramic view of the city.



6 FACILITIES



FACILITIES



LOBBY



INFINITY POOL



QUAN SPA



FITNESS CENTER

WHAT OUR CLIENTS SAY

THAI-CANADIAN CHAMBER OF COMMERCE

"The food was incredible as well
As the service ... without [the hotel
team], this event would not be
successful."

KHUN SURADEJ, ORACLE, THAILAND

"We got very good
feedback from our
partner.
Room condition, food,
excellent break, audio,
and hotel support staff.
Those are really
professional and well
prepared."

KHUN KRIROEK, 1ST WEDDING COUPLE OF THE HOTEL

"We planned to do our wedding ceremony at
this property. This hotel team was amazingly
helpful throughout the planning process
... It was such a memorable affair.
The array of food was superb and everything
went on beautifully. Thanks to the meticulous planning of
the great team who handled the detailed planning. The team
was superb and helped us create
amazing memories for our family."

MS. KATY B., OPERATION SMILE, USA

"My company had the pleasure of hosting
a conference at the Bangkok Marriott Hotel The Surawongse.
...The planning of the conference was made easy by
the attentiveness and organization of the hotel staff
... Not only does the hotel have great quality of service,
but they also have spectacular food.
...I would recommend The Surawongse to anyone
who is looking to host a conference at a remarkably
beautiful hotel with a high quality of service."

AWARDS & RECOGNITION



Guest Review Awards 2018
(Booking.com)



Loved By Guests Award 2019
(Hotels.com)



**Thailand Best Employer
Brand Awards 2019**
(Employer Branding Institute)



**21st Bangkok's Best Restaurant Awards
: Chinese Category - Yào Restaurant**
(Bangkok Best Dining & Entertainment)



Luxury Hotel In Bangkok, Thailand
(Luxury Lifestyle Award 2019)



**Thailand Tatler Best Restaurant
Yào Restaurant and Rooftop Bar**
(Thailand Tatler)



- **Best Luxury City Hotel Thailand**
 - **Best Luxury Wedding Venue Thailand**
- (International Hotel Award)



- **2019 TripAdvisor Certificate Of Excellence**
 - **Hotel**
 - **Praya Kitchen**
 - **Yào Restaurant and Rooftop Bar**
- (TripAdvisor.com)



- **Best New Luxury City Hotel Worldwide 2019**
 - **Best Luxury Hotel Rooftop Bar Worldwide 2019**
- Yào Rooftop Bar**
(Hotel of the Year Awards)

A dark background with a white topographic map of a region, showing contour lines and geographical features. The map is positioned on the left side of the page, with the text centered to its right.

BANGKOK MARRIOTT HOTEL THE SURAWONGSE

262 Surawongse Road Si Phraya, Bangrak, Bangkok, 10500 Thailand

Phone: +66 2 088 5666 Fax: +66 2 088 5777

www.bangkokmarriottsurawongse.com

For sales inquiry, please contact: sirirat.t@marriott.com